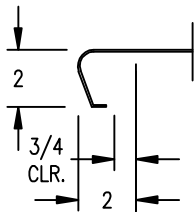


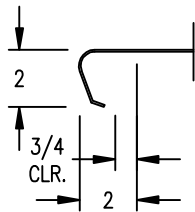
AARON MANUFACTURING INC.

COUNTER TOP'S FRONT EDGING TYPES

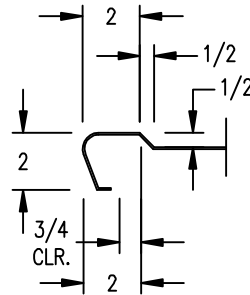
DATE: 8-17-04



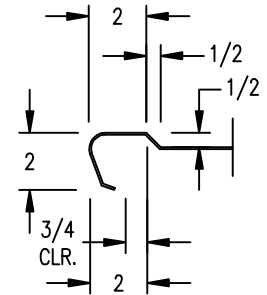
STYLE #E1
WATERFALL FRONT EDGE (FLAT DECK)
STANDARD



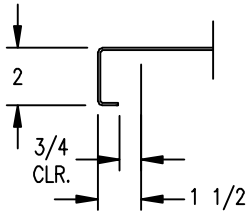
STYLE #E2



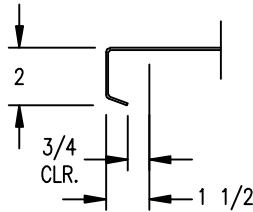
STYLE #E3



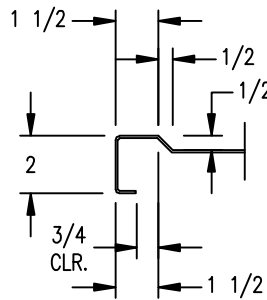
STYLE #E4



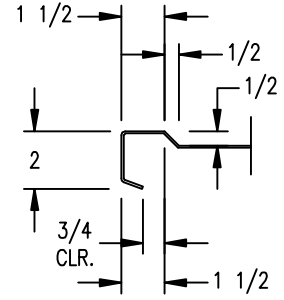
STYLE #E5
2°-90° FRONT EDGE (FLAT DECK)
STANDARD



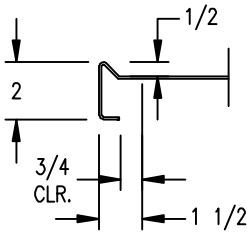
STYLE #E6



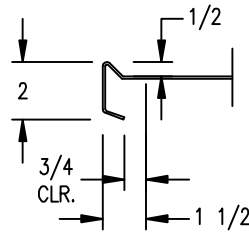
STYLE #E7
2°-90° FRONT EDGE (MARINE)
STANDARD



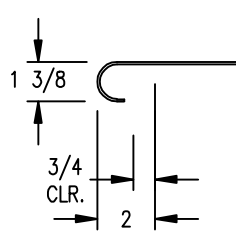
STYLE #E8



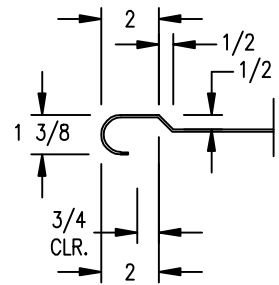
STYLE #E9
2" FRONT EDGE (MARINE)
OPTIONAL



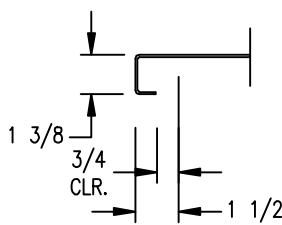
STYLE #E10



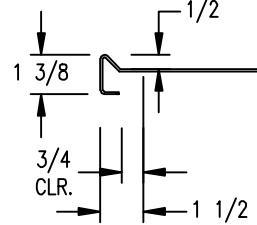
STYLE #E11
1 3/8"-180° FRONT EDGE (FLAT DECK)
OPTIONAL



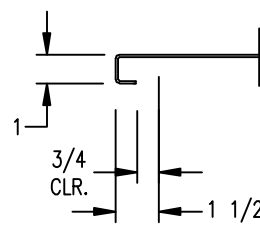
STYLE #E12
1 3/8"-180° EDGE (MARINE)
OPTIONAL



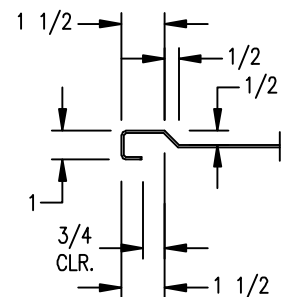
STYLE #E13
1"-90° FRONT EDGE (FLAT DECK)
OPTIONAL



STYLE #E14
2°-90° FRONT EDGE (MARINE)
OPTIONAL



STYLE #E15
1"-90° FRONT EDGE (FLAT DECK)
OPTIONAL



STYLE #E16
1"-90° EDGE (MARINE)
OPTIONAL

AARON MANUFACTURING INC.