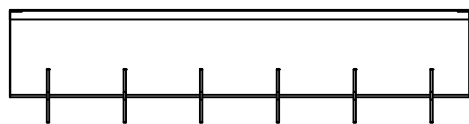


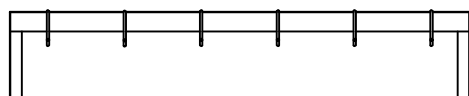
# AARON MANUFACTURING INC.

DATE: 8-17-04

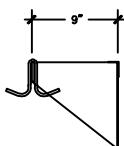
## UTENSIL AND POT RACKS WALL MOUNT TYPES



PLAN VIEW

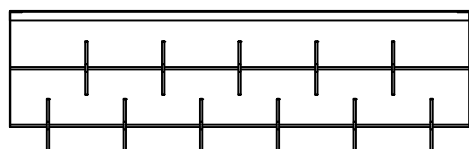


ELEVATION VIEW

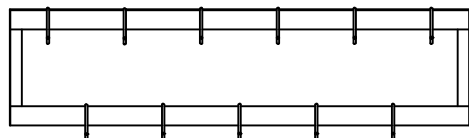


SECTION

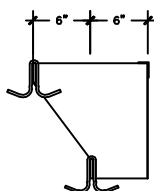
MODEL # APR-S SERIES  
WALL MOUNTED SINGLE POT RACK



PLAN VIEW

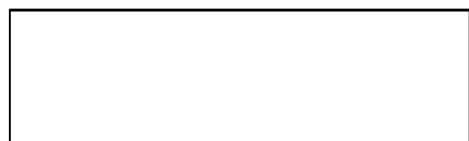


ELEVATION VIEW



SECTION

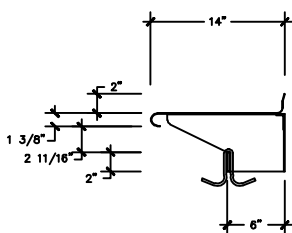
MODEL # APR-D SERIES  
WALL MOUNTED DOUBLE POT RACK



PLAN VIEW



ELEVATION VIEW



SECTION

MODEL # APR-W SERIES  
WALL MOUNTED SHELF WITH POT RACK

MODEL # APR SERIES SPECIFICATIONS						
pot rack length	# of	weight	model #			
			in.	mm		
36"	4	10	4.5	APR-S-36		
48"	5	12	5.5	APR-S-48		
60"	6	14	6.4	APR-S-60		
72"	7	16	7.3	APR-S-72		
84"	8	18	8.2	APR-S-84		
96"	9	20	9.1	APR-S-96		
108"	10	22	10.0	APR-S-108		
120"	11	24	11.0	APR-S-120		
36"	8	13	5.9	APR-D-36		
48"	10	15	6.8	APR-D-48		
60"	12	17	7.7	APR-D-60		
72"	14	19	8.6	APR-D-72		
84"	16	21	9.5	APR-D-84		
96"	18	23	10.4	APR-D-96		
108"	20	25	11.3	APR-D-108		
120"	22	28	12.7	APR-D-120		
36"	4	10	4.5	APR-W-36		
48"	5	17	7.7	APR-W-48		
60"	6	23	10.4	APR-W-60		
72"	7	25	11.3	APR-W-72		
84"	8	18	8.2	APR-W-84		
96"	9	20	9.1	APR-W-96		
108"	10	22	10.0	APR-W-108		
120"	11	24	11.0	APR-W-120		