

AARON MANUFACTURING INC.

FLOOR TROUGHS MODEL # AFT SERIES

DATE: 8-17-04

STANDARD FEATURES

SPECIFICATION: Floor troughs are 14 gauge stainless steel all welded construction, with 14 gauge stainless steel anchoring angles underneath. All troughs with a scrap catch basket assembly at the bottom. Scrap catch basket assembly has a 3-1/8" diameter hole at the bottom for drain connection by jobsite plumber.

All floor trough bottoms pitch down into scrap catch basket assembly.

All floor troughs complete with a non-skid fiberglass grating. (Optional stainless steel grating available)

Economy series available: 16 gauge floor trough construction

All fabrication per N.S.F. #2 standards.

Contact Aaron Bid Department for specific pricing on modified units and accessories.

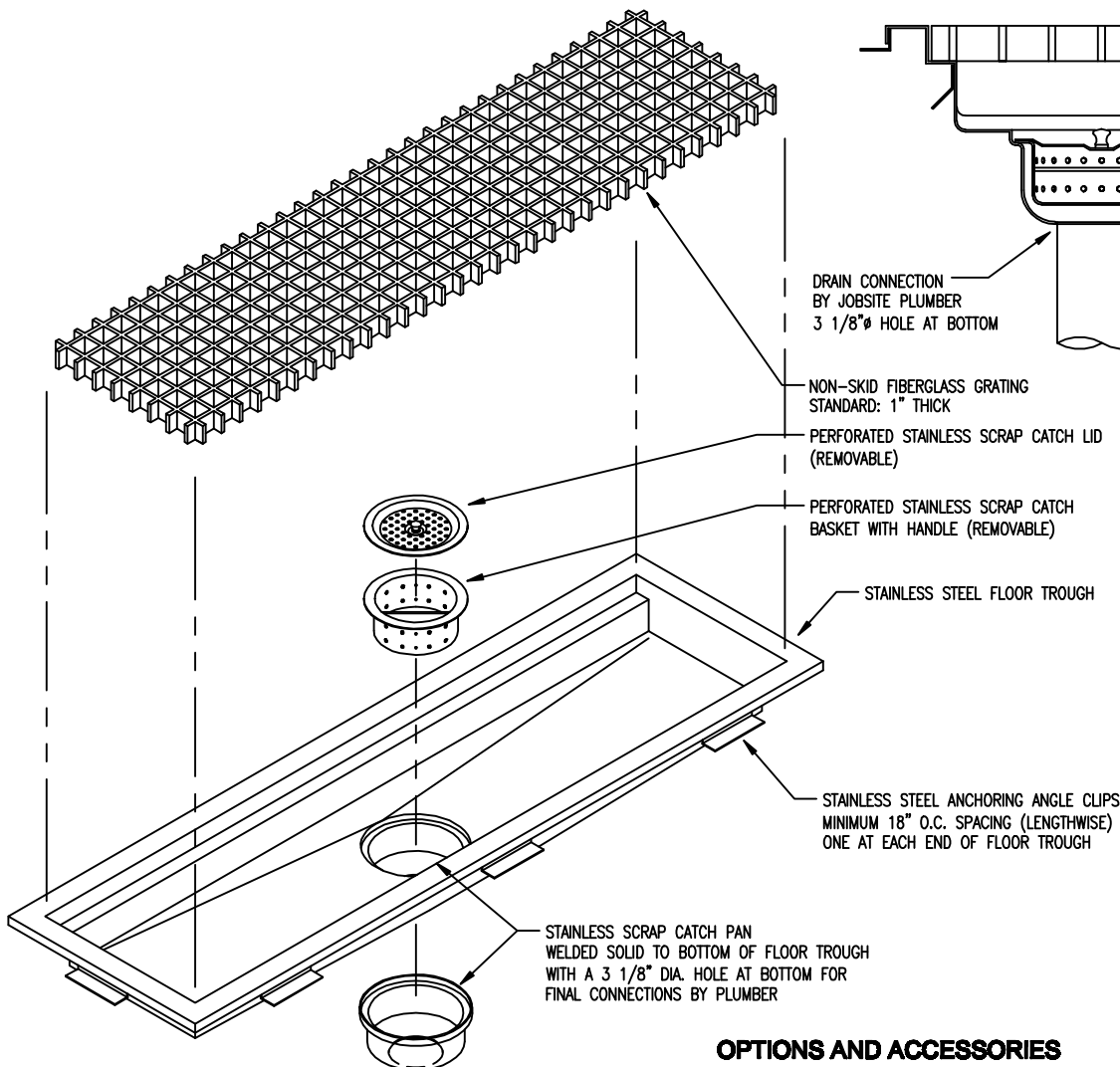
JOB NAME : _____

LOCATION : _____

ITEM # _____

MODEL # _____

QUANTITY : _____



MODEL # AFT-SERIES
FLOOR TROUGH

OPTIONS AND ACCESSORIES

- | MODEL # | DESCRIPTION |
|--------------------------------|---|
| <input type="checkbox"/> MA-85 | CUSTOM FLOOR TROUGH SIZE
VERIFY LENGTH _____ AND WIDTH _____ |
| <input type="checkbox"/> MA-86 | FIBERGLASS GRATING THICKNESS
<input type="checkbox"/> 1" <input type="checkbox"/> 1 1/4" <input type="checkbox"/> 1 1/2" <input type="checkbox"/> 2" |
| <input type="checkbox"/> MA-87 | STAINLESS STEEL GRATING |
| <input type="checkbox"/> MA-88 | CUSTOM STAINLESS STEEL SCRAP CATCH BASKET ASSY
2" DEEP (IN LIEU OF 3 1/4") |

AARON MANUFACTURING INC.

324 S. DIAMOND BAR BLVD., SUITE 879, DIAMOND BAR, CA 91765 * (877) 202-2766 * FAX (800) 498-6655

F.11